

# GARAGE-BUILT RETRO STYLE

**KEEWAY**

## THE HOT-ROD MOTORCYCLE. REDEFINED.

Just what you need for the ride of your life. Pure adrenaline looks. Brilliant engineering. Eye-popping performance. It's all here. Keeway's new K-Light 202 is a '50s/'60s throwback motorcycle you'll love to be seen on.





# SPECIFICATIONS

## • ENGINE

### TYPE

1-cylinder/4-stroke/2-valve

### BORE & STROKE

ø63.5x62.2

### DISPLACEMENT

197

### COMPRESSION RATIO

8.3:1

### GEARBOX

5-speed

### LUBRICATION

Pressure splash lubrication

### CLUTCH

Wet multi-plate

### FUEL SUPPLY

Carburetor

### FUEL CONTROL

OHV

### COOLING SYSTEM

Liquid-cooled

### STARTING

Electric & Kick

### IGNITION

C.D.I

### FINAL DRIVE

Chain

### HORSEPOWER

9.6kW/7500 r/min

## • CHASSIS

### FRAME

Steel tubes, cradle design

### FRONT SUSPENSION

Telescopic forks,  
travel 120mm

### REAR SUSPENSION

Telescopic coil Spring Oil Damped,  
travel 55mm

### FRONT BRAKE

ø280mm disc

### REAR BRAKE

ø240mm disc

### FRONT TIRE

90/90-17

### REAR TIRE

130/90-15

### WHEELBASE

1440mm

### GROUND CLEARANCE

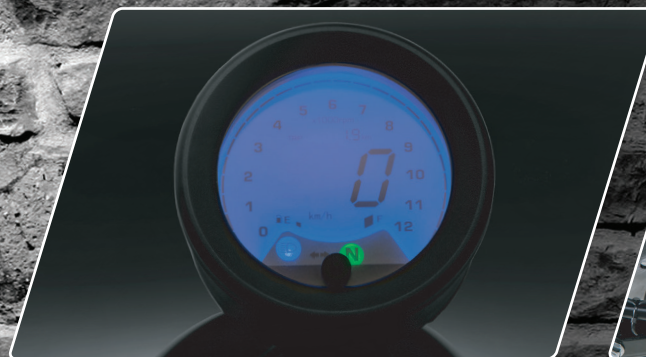
150mm

### DRY WEIGHT

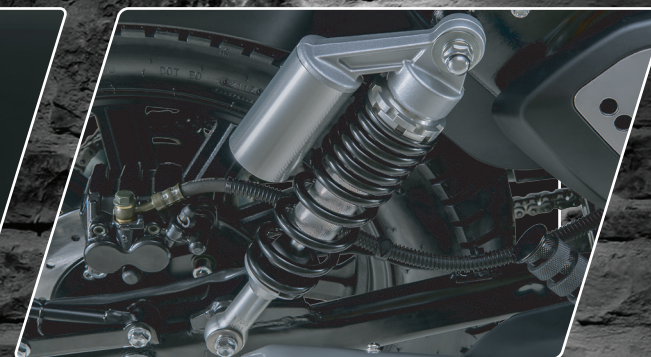
143.5kg

### FUEL CAPACITY

11.8L



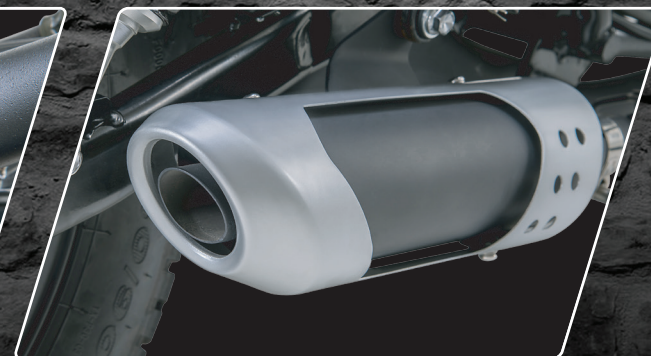
Multi-mode instrumentation:  
retro, yet modern



Piggyback shocks offer comfort  
and control




Superb engineering and exquisite  
detailing



Unique exhaust, powerful and quiet

## CHOOSE YOUR COLOR

 @keewaymalaysia | malaysia.keeway.com



Red



Black

# KEEWAY